



PAR 2080 C PRECISION APPROACH RADAR

PAR 2080 C is an X-band, modular, fixed ground controlled Precision Approach Radar designed for installation sites where existing fixed infrastructures can be exploited and transportability and installation times are not an issue.

PAR 2080 C provides efficient and accurate tracking of over 32 targets, with a field-of-view of 10° in elevation and an azimuth coverage of +/-10°. The radar delivers accurate detection and target discrimination in all weather conditions, with excellent clutter rejection.

PAR 2080 C radar operates with an azimuth resolution and accuracy exceeding ICAO requirements. With successful operation in over eight countries, PAR 2080 C has proven itself to be a reliable instrument with a MTBF in excess of 3000 hrs.

Extensive Built-In-Test capability allows for simple and easy maintenance.

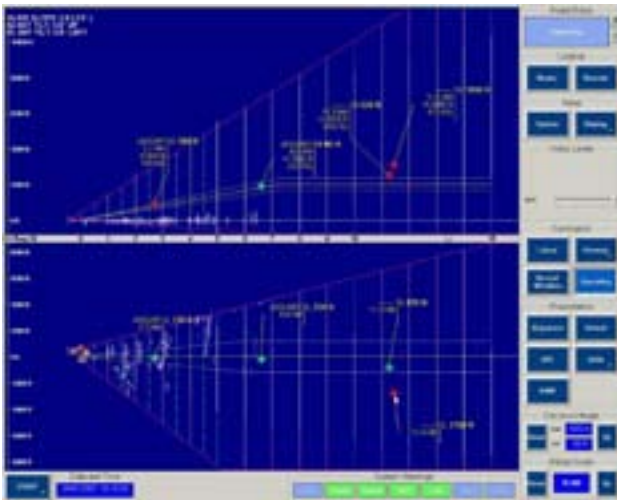
KEY FEATURES

- Multiple landing control
- Fast runway changes
- Track-while-Scan
- Fully coherent transmit/receive system
- Excellent clutter rejection
- Excellent accuracy and discrimination
- Normal weather and heavy rain modes
- Fully redundant RX/ TX/ PX/ data transmission
- High availability and reliability
- Easy maintenance and low support cost (unique BITE feature)
- Clutter mapping and synthetic representation.

GROWTH CAPABILITIES

- Long range mode
- Meteo map

PAR 2080 C - Precision Approach Radar



Operator console presentation

Man Machine Interface

- High resolution TFT display
- Soft keys controls
- Touch screen capability
- Recording system
- Weather presentation
- Obstructions presentation
- Training mode
- System help online
- UPS.

TECHNICAL CHARACTERISTICS

Operative Temperature Range:	from -20°C to +45°C
Storage Temperature Range:	from -32°C to +58°C
Relative Humidity:	100% < 35°C and 65% >35°C
Power:	400 VAC and 230 VAC - 3 Phases
Compliant to MIL STD 810E, methods 505.3, 506.3, 521.1, 509.3, 510.3	
EMI/EMC as per MIL STD 461E	
Data transmission link between Operators Room/Radar Head: F.O., Telephone cable, Radio Link	

Radar Performance

	ICAO requirements	PAR 2080 C
Azimuth resolution:	1.2°	1.0°
Elevation resolution:	0.6°	0.6°
Range resolution	< 120 m	< 100 m
Azimuth accuracy:	< 6 mrad	< 6 mrad
Elevation accuracy:	< 4 mrad	< 4 mrad
Range accuracy:	Error < 3% of range	Error < 2% of range
Normal weather range scale:	20 nmi	
Heavy rain range scale:	10 nmi	
Long range scale:	40 nmi (optional)	

For more information please email sales.marketing@selexgalileo.com

SELEX Galileo S.p.A. - A Finmeccanica Company

Via A. Einstein, 35 - 50013 Campi Bisenzio (FI) - Italy

This publication is issued to provide outline information only and is supplied without liability for errors or omissions. No part of it may be reproduced or used unless authorized in writing.

We reserve the right to modify or revise all or part of this document without notice.

2010 © Copyright SELEX Galileo.

www.selexgalileo.com

SELEXGALILEO\IT\Dsh-109\0110